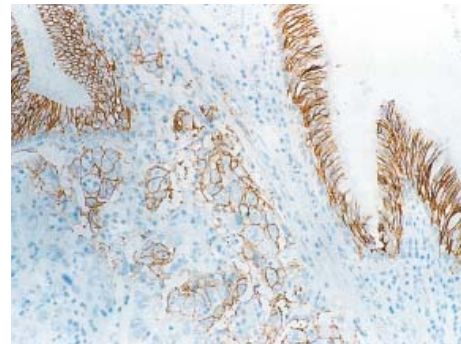
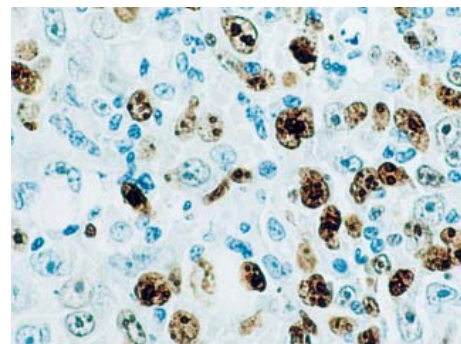


Prostate Specific Antigen



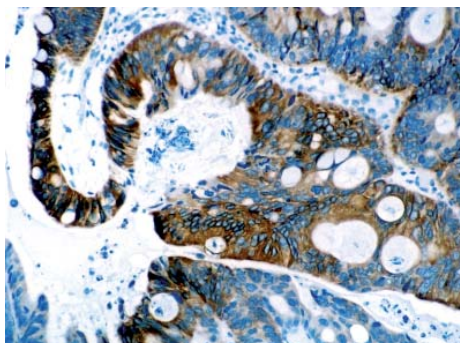
Epithelial-Related Antigen

NCL-MOC-31
Clone MOC-31



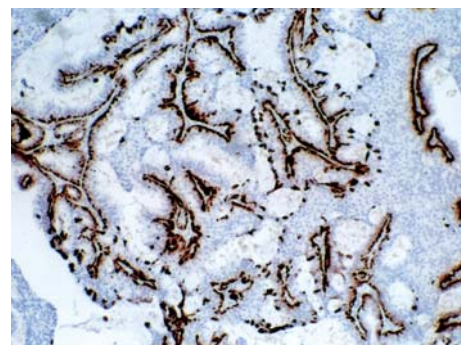
Ki67 Antigen

NCL-L-Ki67-MM1
Clone MM1



Cytokeratin 20

NCL-L-CK20-561
Clone PW31



Cytokeratin 5

NCL-L-CK5
Clone XM26

**Novocastra™
Reference Range™
Prostate Markers**

Leica Microsystems - an international company
with a strong network of customer services

Novocastra reagents are available through the following
offices:

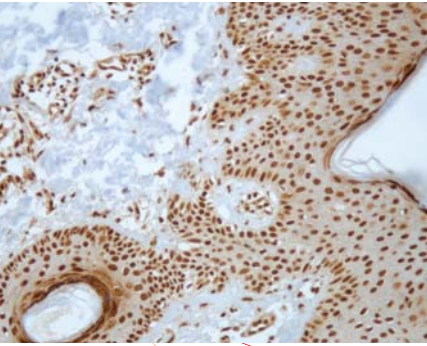
North America

Sales orders/Customer support USA 800 248 0123
Sales orders/Customer support Canada 800 205 3422

Novocastra antibodies are intended for multiple uses.
Please consult the individual specification sheets
at www.leica-microsystems.com, or contact Leica
Microsystems or an authorized distributor to confirm the
intended use.

www.leica-microsystems.com

Novocastra™ Primary Antibodies



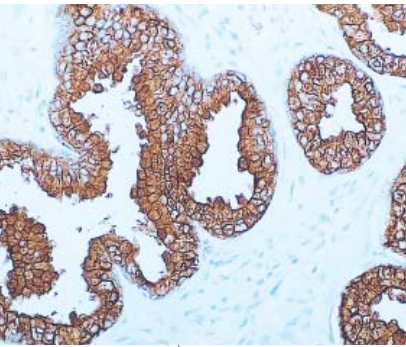
Akt (Phosphorylated)

NCL-L-Akt-Phos
Clone LP18

The **Reference Range** is a group of superior products selected from the Novocastra portfolio by Leica Microsystems. They are presented to ease the choices faced by Pathologists and Scientists by highlighting groups of products to deliver optimal staining of tissues.

When you need robust IHC, choose Novocastra primary antibodies. Developed and proven with formalin-fixed, paraffin-embedded tissue, Novocastra antibodies provide the quality and consistency that pathologists rely on.

Don't compromise – to get the most from your Novocastra reagents, always rely on Novolink™ Secondary Detection Systems, Novocastra diluent, and Novocastra ancillaries and buffers.



Prostate Specific Antigen

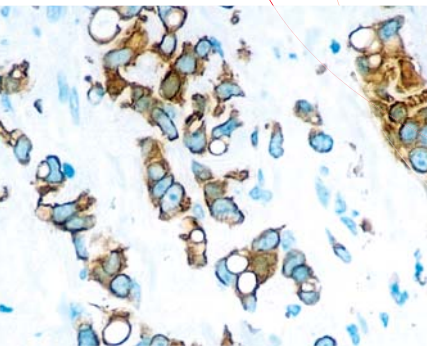
NCL-PSA-431
Clone 35H9



- Novolink uses Compact Polymer™ technology for exceptionally high sensitivity



- Novocastra antibodies are proven with Novocastra primary antibody diluent, don't trust your important stains to unproven substitutes



Cytokeratin 7

NCL-L-CK7-560
Clone RN7

- Novocastra antibodies form an important part of Leica Microsystems' broad range of Lean Histology™ solutions
- Novocastra Science™ – experience, innovation and support that delivers quality reagents for consistent staining

Name	Clone	Product Code	Breast IHC	Leukemia IHC	Lymphoma IHC	Melanoma IHC	GI Tract IHC	Prostate IHC	Lung IHC	Renal IHC	Special IHC
Anaplastic Lymphoma Kinase (ALK)	5A4	NCL-ALK			✓						
Akt (Phosphorylated)	LP18	NCL-L-Akt-Phos	✓					✓			✓
B Cell Specific Octamer Binding Protein-1 (BOB-1)	TG14	NCL-L-BOB-1			✓						
bcl-2 Oncoprotein	3.1	NCL-bcl-2-486			✓						
Bcl-6 Oncoprotein	LN22	NCL-L-Bcl-6-564			✓						
Calretinin	CAL6	NCL-L-CALRET-566							✓		✓
CD1a	MTB1	NCL-L-CD1a-235			✓						
CD3	LN10	NCL-L-CD3-565		✓	✓						
CD4	4B12	NCL-L-CD4-368			✓						
CD5	4C7	NCL-L-CD5-4C7			✓						
CD7	LP15	NCL-L-CD7-580			✓						
CD8	1A5	NCL-L-CD8-295			✓						
CD10	56C6	NCL-L-CD10-270		✓	✓					✓	✓
CD11c	5D11	NCL-L-CD11c-563		✓							
CD15	BY87	NCL-L-CD15		✓	✓						
CD19	BT51E	NCL-L-CD19-163			✓						✓
CD20	MJ1	NCL-CD20-MJ1			✓						
CD23	1B12	NCL-L-CD23-1B12			✓						
CD25 (Interleukin-2 Receptor)	4C9	NCL-CD25-305			✓						
CD30	JCM182	NCL-L-CD30-591			✓						
CD33	PWS44	NCL-L-CD33		✓							
CD34 (Endothelial Cell Marker)	QBEnd/10	NCL-L-END		✓			✓				✓
CD45	X16/99	NCL-LCA		✓	✓						
CD56 (NCAM)	1B6	NCL-L-CD56-1B6		✓	✓						✓
CD68	514H12	NCL-L-CD68		✓							
CD79a	11E3	NCL-L-CD79a-225		✓	✓						
CDX2	AMT28	NCL-CDX2					✓				
Cyclin D1	P2D11F11	NCL-L-CYCLIN D1-GM			✓						
Cytokeratin Multi (AE1/AE3)	AE1/AE3	NCL-L-AE1/AE3					✓				✓
Cytokeratin 5	XM26	NCL-L-CK5	✓					✓	✓		✓
Cytokeratin 7	RN7	NCL-L-CK7-560	✓				✓	✓			
Cytokeratin 14	LL002	NCL-L-LL002								✓	
Cytokeratin 20	PW31	NCL-L-CK20-561	✓				✓	✓			
DOG-1	K9	NCL-L-DOG-1					✓				
Epithelial-Related Antigen	MOC-31	NCL-MOC-31						✓	✓	✓	✓
Epithelial Specific Antigen	VU-1D9	NCL-ESA								✓	
Estrogen Receptor	6F11	NCL-L-ER-6F11	✓								✓
Folate Receptor Alpha	BN3.2	NCL-L-FRalpha									✓
Helicobacter pylori	Polyclonal	NCL-HPp					✓				
Immunoglobulin A	N1CLA	NCL-L-IgA			✓					✓	✓
Immunoglobulin D	DRN1C	NCL-L-IgD			✓					✓	✓
Immunoglobulin M	8H6	NCL-L-IgM			✓					✓	✓
Kappa Light Chain	CH15	NCL-L-KAP-581			✓						
Ki67 Antigen	MM1	NCL-L-Ki67-MM1	✓	✓	✓	✓	✓	✓	✓		✓
Lambda	SHL53	NCL-L-LAM-578			✓						
Melan A	A103	NCL-L-MelanA				✓					
Melanoma Marker (HMB45)	HMB45	NCL-HMB45				✓					
Mismatch Repair Protein (MLH1)	ES05	NCL-L-MLH1		✓			✓				✓
Mismatch Repair Protein (MSH2)	25D12	NCL-MSH2					✓				
Mismatch Repair Protein (MSH6)	PU29	NCL-L-MSH6					✓				
Napsin	IP64	NCL-L-NapsinA							✓		
Oct-2	Oct-207	NCL-L-OCT2			✓						
p53 Protein (DO-7)	DO-7	NCL-L-p53-DO7	✓								✓
Pax-5	1EW	NCL-L-PAX-5			✓						
Progesterone Receptor	16	NCL-L-PGR-312	✓								✓
Prostate Specific Antigen	35H9	NCL-PSA-431						✓			
Renal Cell Carcinoma Marker	66.4.C2	NCL-RCC								✓	
S-100	Polyclonal	NCL-L-S100p				✓					✓
Terminal Deoxynucleotidyl Transferase	SEN28	NCL-L-TdT-339		✓	✓						
Thyroid Transcription Factor-1	SPT24	NCL-L-TTF-1							✓		✓
Vimentin	SRL33	NCL-L-VIM-572								✓	✓
Wilms' Tumor	WT49	NCL-L-WT1-562								✓	
Zap-70	L453R	NCL-L-ZAP-70		✓	✓						

